

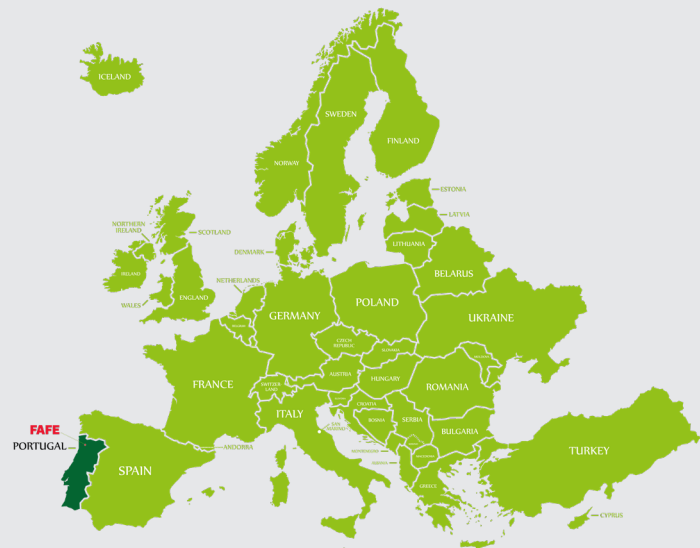


ORGANIZAÇÃO:  
AEMI (ASSOCIAÇÃO DAS INSTITUIÇÕES EUROPEIAS DE MIGRAÇÃO), MUNICÍPIO DE FAFE, MUSEU DAS MIGRAÇÕES E DAS COMUNIDADES PORTUGUESAS  
ASSOCIATION OF EUROPEAN MIGRATION INSTITUTIONS, MUNICÍPIO DE FAFE, MUSEUM OF PORTUGUESE MIGRATIONS AND COMMUNITIES

## ABOUT FAFE

Fafe is a municipality in the northern Portuguese district of Braga. Fafe has about 50 thousand inhabitants, a geographical area of 219km<sup>2</sup> and is located 65 kms away from Porto airport and 15 kms away from Guimarães.

The potential of the architectural, landscape and natural heritage is used in the best way to attract visitors. The beautiful handicrafts, the "Architecture of Brazilians", the pedestrian paths, the wonderful waterfalls and the several museums that tell the history of the city are the highlights of a county rich in traditions and cultural diversity. The stages of the World Rally Championship (WRC), the gastronomy of excellence, whose icon is the veal roasted in a wood oven, and the breathtaking landscapes are also some of the many anchors of tourism in Fafe.



### HOW TO GET IN FAFE

#### By bus

About an hour and ten minutes  
8 €

Please check here:

[www.getbus.eu/](http://www.getbus.eu/)

Note: Getbus makes the direct trip from the airport to the bus station in the city of Guimarães, near Fafe. Already in Guimarães, buses leave regularly for Fafe, which is 15kms away (cost of 2.5€). Please check here: <https://www.checkmybus.pt/guimaraes/afa>.

#### By taxi

About 43 minutes  
45 a 60€

#### By car

About 43 minutes travel (65.8 km) by highway.

Please check here how to rent a car at Porto airport:

[www.aeroportoporto.pt/en/opo/access-parking/for-your-full-comfort/car-rental](http://www.aeroportoporto.pt/en/opo/access-parking/for-your-full-comfort/car-rental)

#### By train

About an hour and twenty minutes (Porto-Guimarães)  
Since 3,65€

Please check here:

<https://www.cp.pt/passageiros/en/buy-tickets>

Note: Already in Guimarães, buses leave regularly for Fafe, which is 15kms away (cost of 2.5€). Please check here: [www.checkmybus.pt/guimaraes/afa](http://www.checkmybus.pt/guimaraes/afa).

### ACCOMMODATION IN FAFE

#### Fafense Hotel

[www.hotelfafense.pt/](http://www.hotelfafense.pt/)  
(located in the city center)

#### Flag Hotel Guimarães

[www.flagworldhotels.com/hotel.php?h=2](http://www.flagworldhotels.com/hotel.php?h=2)  
(0,7 km from the city center)

#### Rilhadas Casas de Campo

[www.rilhadas.com](http://www.rilhadas.com)  
(4,2 km from Fafe)

#### Open Village Sports

**Hotel & Spa Club**  
[www.ovs.pt/](http://www.ovs.pt/)  
(6,7 km from the city center)

#### Hotel Fundador

[www.hotelfundador.com/](http://www.hotelfundador.com/)  
(10,6km from Fafe)

#### Hotel de Guimarães

[www.hotel-guimaraes.com/](http://www.hotel-guimaraes.com/)  
(10,7 km from Fafe)

### TIME ZONE

Western European

Summer Time

WEST

Time Zone

Europe/Lisbon

Universal Time Coordinated

GMT / UTC

UTC+0

Daylight Saving Time

WEST: Western European

Summer Time

UTC+1

Standard Time

WET: Western European Time

UTC+0

### WEATHER IN FAFE

The average minimum temperature in Fafe in September is 14.7°C (58.46°F). The amount of rain in September is normal with an average of 75mm (3.0in). It rains on average a total of 11 days. The average maximum daytime temperature lies around 24.0°C (75.2°F).

### CONTACTS

#### Fafe Tourist Office

Loja Interativa de Turismo  
Praça 25 de Abril  
4820-142 Fafe  
Telephone: +351 253 504 294  
E-mail: [geral@cm-fafe.pt](mailto:geral@cm-fafe.pt)

### EMERGENCY CONTACTS

**SOS number: 112**

**Fire department:**

+351 253 598 111

**Municipal Police:**

+351 253 700 400

**National Guard (GNR):**

+351 253 490 890

REFÚGIO  
E ACOLHIMENTO  
- CAMINHOS  
PARA A INSERÇÃO  
REFUGEE AND HOSTING  
- PATHS TOWARDS INCLUSION



ORGANIZAÇÃO:  
AEMI ASSOCIAÇÃO DAS INSTITUIÇÕES EUROPEIAS DE MIGRAÇÃO; MUNICÍPIO DE FAFE, MUSEU DAS MIGRAÇÕES E DAS COMUNIDADES PORTUGUESAS  
ASSOCIATION OF EUROPEAN MIGRATION INSTITUTIONS; MUNICIPIO DE FAFE, MUSEUM OF PORTUGUESE MIGRATIONS AND COMMUNITIES

29.09.2022: Conference Day 1

08:30 > Welcome desk

09:00 > Opening remarks and greetings

Paula R. Nogueira, Councilwoman for Culture, Education, International Affairs & Twinnings. Municipality of Fafe  
Cathrine Kyo Hermansen, Chairwoman, AEMI  
Beatriz Rocha-Trindade, CEMRI UAb, Lisboa

09:30 > Fafe, a new vision to address the theme of migrations in the territory

Paula R. Nogueira, Councilwoman for Culture, Education, International Affairs & Twinnings. Municipality of Fafe

10:00 > Panel 1: Current migration – Receiving and welcoming people

Chair: Maddalena Tirabassi

The host's role in hosting refugees: actors and politics in Portugal

Lúcio Sousa (Universidade Aberta, Lisbon/ Portugal)

Analysis of the International Protection Reception System in Spain

Alicia Bañuls Millet; Ana Sales Ten; Isis María Sánchez Estellés (University of Valencia/ Spain)

Delving into Welcoming Spaces: The social and economic emplacement of migrants and refugees in shrinking rural areas of Spain

Leticia Santaballa and Laura Oso (University of A Coruña/ Spain)

«The challenge of welcoming Ukrainian refugees – Fafe with open arms»

Dalila Oliveira, Senior social care specialist Municipality of Fafe

11:30 > Coffee break

12:00 > Panel 2: Current migration – Integration politics and practise

Chair: Emilia García López

Non-assimilationist integration models: Opportunities and challenges for cultural mediation

Simó-Noguera, Carles; Giner-Monfort, Jordi; Velasco-Mengod, Jorge (University of Valencia/ Spain)

The various shades of integration practices in Slovenia

Špela Kastelic, Asja Pehar Senekovič (ZRC SAZU, Slovenian Migration Institute, Ljubljana/ Slovenia)

13:00 > Lunch (own cost)

14:00 > Panel 3: Heart, soul and identity – The human aspects of migration

Chair: Kristina Toplak

Vulnerable and Voiceless. Losing the pride of African sovereignty through Migration'

Richard Osei Bonsu, OMANIAE, Antwerp/ Belgium  
Exploring individual positionality in working

with refugess (Workshop)

Maja Gostič, (ZRC SAZU, Slovenian Migration Institute, Ljubljana/ Slovenia)

15:30 > Coffee break

16:00 > Panel 4: Migration in Museums – Documentation, participation, acting

Chair: Heidi Martins

Documenting recent migration: Reading by an Afghan evacuee and an Ukrainian refugee about their journey to Denmark (audi and panel discussion)

Emma Barnhøj Jeppesen, Hannah Tendler, Mathias Dolmer Rasmussen (Migration Museum of Denmark, Copenhagen/ Denmark)

The sound of Inclusion: The Singing Machine Project: Documentary film

Dietmar Osses (LWL-Industriemuseum Zeche Hannover, Bochum/ Germany)

17:30 > End of Conference Day 1

CULTURAL PROGRAM & GET TOGETHER

30.09.2022: Conference Day 2

09:00 > Panel 5: Stories of migration in museums

Chair: Dietmar Osses

Stories of fear, fight, and faith. The project "Moving Lusitania" at the CMDH

Heidi Martins, Centre de Documentation sur les Migrations Humaines, Dudelange/ Luxembourg.

Moving. A children exhibition about recent migration

Ludwika Radacka-Majek (Emigration Museum in Gdynia/ Poland)

The Julian-Dalmatian Exodus (1945-1956)

Giorgia Barzetti (MEI - National Italian Emigration Museum /Mu.MA - Institution of Maritime and Migrations Museums, Genoa/ Italy)

10:30 > Coffee break

11:00 > Panel 6: Refuge and hosting in 20th century post war history

Chair: Adam Walaszek

Seeking refuge, staying forever.

Kristina Toplak (ZRC SAZU, Slovenian Migration Institute, Ljubljana/ Slovenia)

Polish Refugees in Seattle, Washington:

Cultural continuity and social inclusion

Dorota Przaszalowicz (Institute of American Studies and Polish Diaspora, Jagiellonian University, Kraków/ Poland)

Maczków – Polish enclave in Germany 1945-48

Jacek Barsk (Porta Polonica - The Documentation Centre for the Culture and History of the Poles in Germany, Bochum/ Germany)

12:30 > Lunch (own cost)

13:30 > Panel 7: Challenges of global migration in history

Chair: Mathias Dolmer Rasmussen

Skandinavian Utopian Communities 1700-1900

Teuvo Peltoniemi (Journalist, Helsinki/ Finland)

Basques, Danes and Italians in the South of Buenos Aires Province Language issues

Marina Hansen (University of the Basque Country/ Spain)

Complicated (hi)story of migration and fishing: The case of North Adriatic

Nataša Rogelja Caf (ISIM ZRC SAZU, Slovenian Migration Institute, Ljubljana/ Slovenia)

15:00 > Coffee break

15:30 > Panel 8: Migration, memory and remembrance

Chair: Špela Kastelic

To Look Back. The migration experience and the rehabilitation of Lot's wife

Wolfgang Grams (Routes to Roots, Oldenburg/ Germany)

"Memorial drama" in Northeastern China: Entanglement of difficult heritage and mobility in the 20th century

Martina Bofulin (ZRC SAZU, Slovenian Migration Institute, Ljubljana/ Slovenia)

Decolonization and repatriation: The Portuguese case of the retornados from Angola and Mozambique

Morgane Delaunay1 (Centro de Estudos Comparatistas, Faculdade de Letras, Universidade de Lisboa, CECComp – FLUL Lisbon/ Portugal)

Humanitarianism as a depoliticization tool in protracted refugee situations and women's resistance in Palestine

María González Flores (University of A Coruña/ Spain)

17:30 > Wrap up & closing words

18:00 > End of the conference

CULTURAL PROGRAM / DINNER

01.10.2022:  
Day 3: General Assembly and Excursion

10:00 > AEMI General Assembly (members only)

12:00 > Excursion

16:00 > End of the excursion



**REFÚGIO  
E ACOLHIMENTO  
- CAMINHOS  
PARA A INSERÇÃO**  
REFUGEE AND HOSTING  
- PATHS TOWARDS INCLUSION



ORGANIZAÇÃO:  
AEMI ASSOCIAÇÃO DAS INSTITUIÇÕES EUROPEIAS DE MIGRAÇÃO, MUNICÍPIO DE FAFE, MUSEU DAS MIGRAÇÕES E DAS COMUNIDADES PORTUGUESES  
ASSOCIATION OF EUROPEAN MIGRATION INSTITUTIONS; MUNICÍPIO DE FAFE, MUSEUM OF PORTUGUESE MIGRATIONS AND COMMUNITIES

**CULTURAL & SOCIAL PROGRAM**

**29.09.2022**

18:30 > Guided visit to the Museum of Migrations and Communities of Fafe

19:30 > Guided visit to the Teatro Cinema de Fafe (1923)

> Art Exhibition – Essays on Emigration by Orlando Pompeu

20:30 > Dinner (on own cost)



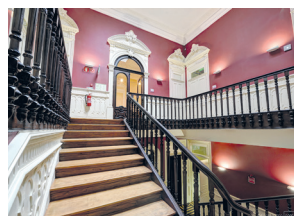
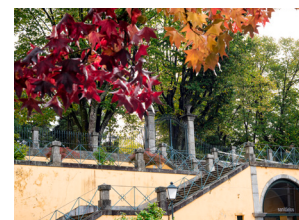
**30.09.2022**

18:00 > Guided visit to a Brazilian house («Brazilian palace» - late 19th century and early 20th century) - Municipal Archives

> Anne Frank – Historic Reminder, documental exhibition - Municipal Archives noble hall

19:00 > Guided visit to the Calvário Garden (1892) - Dinosaurs Exhibition (Celebrating the historic garden 130th anniversary)

20h30 > Official dinner for members and speakers



**01.10.2022**

Excursion (\*)

12:00 > Departure  
(City Hall main Building, bus)

12:30 > The Oaks woods- Up Hills of Fafe

13:00 > «Casa do Penedo»  
- Guided visit to the «Rock House» - the most peculiar house in the world

13:30 > The Confurco Farm – Traditional lunch & Wine Experience

(\*) Registration mandatory (opening day)

